

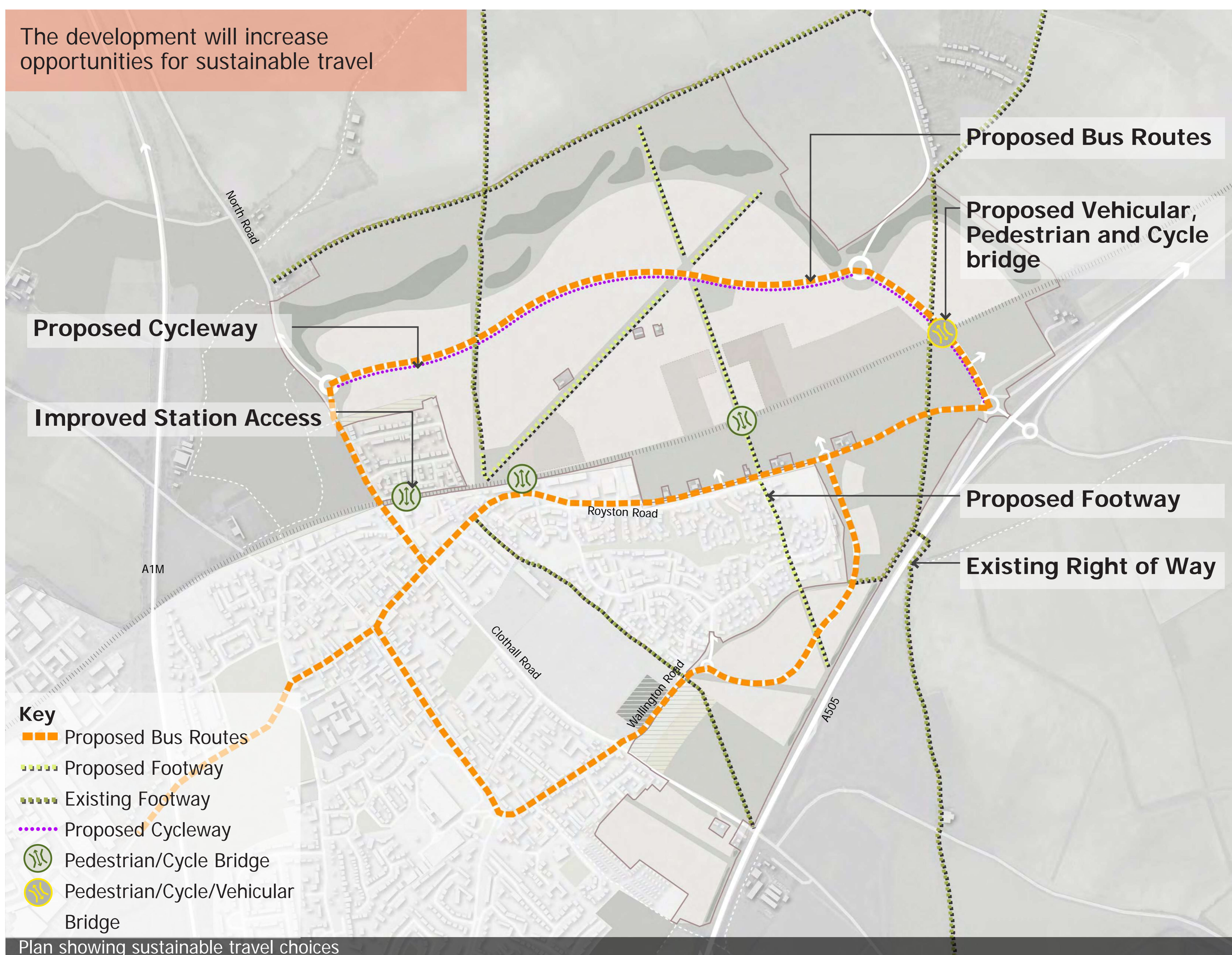
July Consultation - What you told us

A significant number of you said that we should extend and improve **cycle routes**.

You also said that improvements to the **railway station** are very important to you in terms of infrastructure investment. You were also concerned about **parking capacity** at the train station.

We are promoting sustainable travel throughout Baldock by improving cycling and walking opportunities and also improving access to bus and rail services.

The development will increase opportunities for sustainable travel



Walking and Cycling

At least three new rail crossing points for pedestrians and cyclists will be delivered.

Bus Strategy

A new/extended bus service will link Baldock North with Baldock rail station, the town centre and beyond to Letchworth.

For Baldock South East we plan to extend existing bus services into these sites and provide improvements in terms of frequency to the surrounding network

Rail Strategy

A new access to the railway station from the north is proposed.

Additional cycle parking at this northern access point is proposed to assist those cycling to the station from the North of Baldock site.

We are also looking to provide new car parking to serve the station.