

July Consultation - What you told us

46% of comments received in the free text section of the consultation forms were related to transport and car parking

70% of respondents would prioritise new link roads

58% of respondents thought local roads could be improved

The development will fund and deliver two new link roads. Both will be single carriageway roads with a 30mph speed limit and will be designed to safely accommodate pedestrians, cyclists and buses.



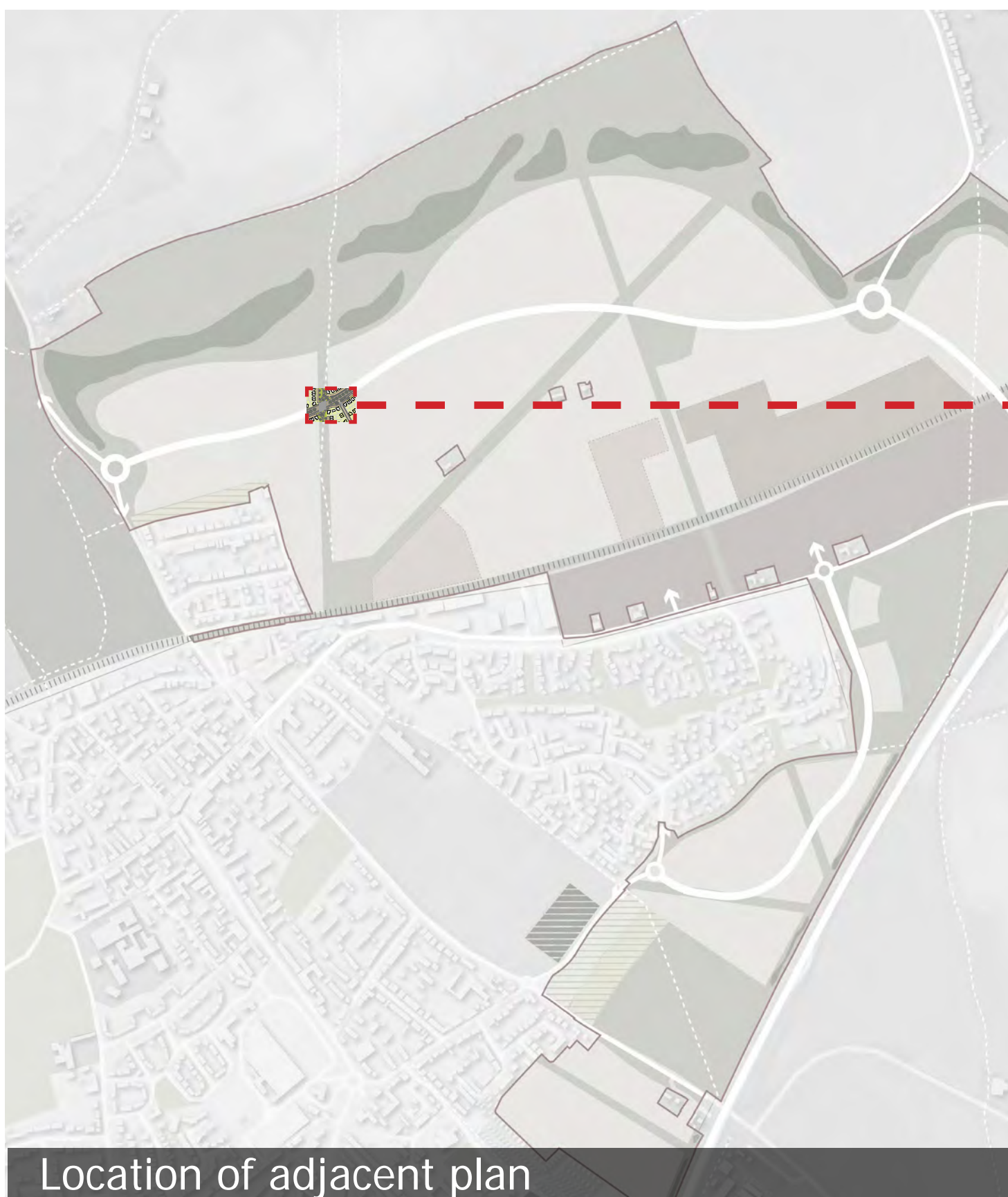
Illustrative view along northern link road

We are proposing two new link roads to be developed in order to accommodate both new and existing traffic. The northern link road will connect the North Road with Royston Road while the southern link road will connect Royston Road with Wallington Road.

The roads will be built before the majority of development comes forward.



Plan showing proposed Link Road alignments



Location of adjacent plan



Plan view of Northern Link Road